

FINAL JEE-MAIN EXAMINATION – JUNE, 2022

(Held On Tuesday 28th June, 2022)

TIME : 3 : 00 PM to 6 : 00 PM

PHYSICS

SECTION-A

1. Velocity (v) and acceleration (a) in two systems of units 1 and 2 are related as $v_2 = \frac{n}{m} v_1$ and $a_2 = \frac{a_1}{mn}$ respectively. Here m and n are constants. The relations for distance and time in two systems respectively are:

(A) $\frac{n^3}{m^3} L_1 = L_2$ and $\frac{n^2}{m} T_1 = T_2$

(B) $L_1 = \frac{n^4}{m^2} L_2$ and $T_1 = \frac{n^2}{m} T_2$

(C) $L_1 = \frac{n^2}{m} L_2$ and $T_1 = \frac{n^4}{m^2} T_2$

(D) $\frac{n^2}{m} L_1 = L_2$ and $\frac{n^4}{m^2} T_1 = T_2$

Official Ans. by NTA (A)

Allen Ans. (A)

2. A ball is spun with angular acceleration $\alpha = 6t^2 - 2t$ where t is in second and α is in rad s^{-2} . At $t = 0$, the ball has angular velocity of 10 rad s^{-1} and angular position of 4 rad . The most appropriate expression for the angular position of the ball is:

(A) $\frac{3}{2} t^4 - t^2 + 10t$

(B) $\frac{t^4}{2} - \frac{t^3}{3} + 10t + 4$

(C) $\frac{2t^4}{3} - \frac{t^3}{6} + 10t + 12$

(D) $2t^4 - \frac{t^3}{2} + 5t + 4$

Official Ans. by NTA (B)

Allen Ans. (B)

TEST PAPER WITH ANSWER

3. A block of mass 2 kg moving on a horizontal surface with speed of 4 ms^{-1} enters a rough surface ranging from $x = 0.5 \text{ m}$ to $x = 1.5 \text{ m}$. The retarding force in this range of rough surface is related to distance by $F = -kx$ where $k = 12 \text{ Nm}^{-1}$. The speed of the block as it just crosses the rough surface will be:

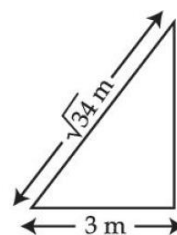
(A) Zero (B) 1.5 ms^{-1}

(C) 2.0 ms^{-1} (D) 2.5 ms^{-1}

Official Ans. by NTA (C)

Allen Ans. (C)

4. A $\sqrt{34} \text{ m}$ long ladder weighing 10 kg leans on a frictionless wall. Its feet rest on the floor 3 m away from the wall as shown in the figure. If F_f and F_w are the reaction forces of the floor and the wall, then ratio of F_w/F_f will be:
(Use $g = 10 \text{ m/s}^2$)



(A) $\frac{6}{\sqrt{110}}$ (B) $\frac{3}{\sqrt{113}}$

(C) $\frac{3}{\sqrt{109}}$ (D) $\frac{2}{\sqrt{109}}$

Official Ans. by NTA (C)

Allen Ans. (C)

5. Water fall from a 40 m high dam at the rate of $9 \times 10^4 \text{ kg}$ per hour. Fifty percentage of gravitational potential energy can be converted into electrical energy. Using this hydroelectric energy number of 100W lamps, that can be lit, is:

(Take $g = 10 \text{ ms}^{-2}$)

- (A) 25 (B) 50
(C) 100 (D) 18

Official Ans. by NTA (B)

Allen Ans. (B)

6. Two objects of equal masses placed at certain distance from each other attracts each other with a force of F . If one-third mass of one object is transferred to the other object, then the new force will be :

- (A) $\frac{2}{9}F$ (B) $\frac{16}{9}F$
(C) $\frac{8}{9}F$ (D) F

Official Ans. by NTA (C)

Allen Ans. (C)

7. A water drop of radius $1 \mu\text{m}$ falls in a situation where the effect of buoyant force is negligible. Co-efficient of viscosity of air is $1.8 \times 10^{-5} \text{ Nsm}^{-2}$ and its density is negligible as compared to that of water 10^6 gm^{-3} . Terminal velocity of the water drop is:

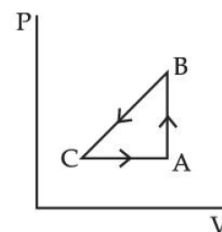
(Take acceleration due to gravity = 10 ms^{-2})

- (A) $145.4 \times 10^{-6} \text{ ms}^{-1}$
(B) $118.0 \times 10^{-6} \text{ ms}^{-1}$
(C) $132.6 \times 10^{-6} \text{ ms}^{-1}$
(D) $123.4 \times 10^{-6} \text{ ms}^{-1}$

Official Ans. by NTA (D)

Allen Ans. (D)

8. A sample of an ideal gas is taken through the cyclic process ABCA as shown in figure. It absorbs, 40 J of heat during the part AB, no heat during BC and rejects 60J of heat during CA. A work 50J is done on the gas during the part BC. The internal energy of the gas at A is 1560J. The work done by the gas during the part CA is:



- (A) 20 J (B) 30 J
(C) -30J (D) -60 J

Official Ans. by NTA (B)

Allen Ans. (B)

9. What will be the effect on the root mean square velocity of oxygen molecules if the temperature is doubled and oxygen molecule dissociates into atomic oxygen?

- (A) The velocity of atomic oxygen remains same
(B) The velocity of atomic oxygen doubles
(C) The velocity of atomic oxygen becomes half
(D) The velocity of atomic oxygen becomes four times

Official Ans. by NTA (B)

Allen Ans. (B)

10. Two point charges A and B of magnitude $+8 \times 10^{-6} \text{ C}$ and $-8 \times 10^{-6} \text{ C}$ respectively are placed at a distance d apart. The electric field at the middle point O between the charges is $6.4 \times 10^4 \text{ NC}^{-1}$. The distance 'd' between the point charges A and B is:

- (A) 2.0 m (B) 3.0 m
(C) 1.0 m (D) 4.0 m

Official Ans. by NTA (B)

Allen Ans. (B)

11. Resistance of the wire is measured as 2Ω and 3Ω at 10°C and 30°C respectively. Temperature co-efficient of resistance of the material of the wire is :

(A) 0.033°C^{-1} (B) $-0.033^\circ\text{C}^{-1}$
(C) 0.011°C^{-1} (D) 0.055°C^{-1}

Official Ans. by NTA (A)

Allen Ans. (A)

12. The space inside a straight current carrying solenoid is filled with a magnetic material having magnetic susceptibility equal to 1.2×10^{-5} . What is fractional increase in the magnetic field inside solenoid with respect to air as medium inside the solenoid?

(A) 1.2×10^{-5} (B) 1.2×10^{-3}
(C) 1.8×10^{-3} (D) 2.4×10^{-5}

Official Ans. by NTA (A)

Allen Ans. (A)

13. Two parallel, long wires are kept 0.20 m apart in vacuum, each carrying current of $x\text{ A}$ in the same direction. If the force of attraction per meter of each wire is $2 \times 10^{-6}\text{ N}$, then the value of x is approximately:

(A) 1 (B) 2.4
(C) 1.4 (D) 2

Official Ans. by NTA (C)

Allen Ans. (C)

14. A coil is placed in a time varying magnetic field. If the number of turns in the coil were to be halved and the radius of wire doubled, the electrical power dissipated due to the current induced in the coil would be:

(Assume the coil to be short circuited.)

(A) Halved
(B) Quadrupled
(C) The same
(D) Doubled

Official Ans. by NTA (D)

Allen Ans. (D)

15. An EM wave propagating in x -direction has a wavelength of 8 mm . The electric field vibrating y -direction has maximum magnitude of 60 Vm^{-1} . Choose the correct equations for electric and magnetic fields if the EM wave is propagating in vacuum :

(A) $E_y = 60 \sin \left[\frac{\pi}{4} \times 10^3 (x - 3 \times 10^8 t) \right] \hat{j} \text{Vm}^{-1}$

$B_z = 2 \sin \left[\frac{\pi}{4} \times 10^3 (x - 3 \times 10^8 t) \right] \hat{k} \text{T}$

(B) $E_y = 60 \sin \left[\frac{\pi}{4} \times 10^3 (x - 3 \times 10^8 t) \right] \hat{j} \text{Vm}^{-1}$

$B_z = 2 \times 10^{-7} \sin \left[\frac{\pi}{4} \times 10^3 (x - 3 \times 10^8 t) \right] \hat{k} \text{T}$

(C) $E_y = 2 \times 10^{-7} \sin \left[\frac{\pi}{4} \times 10^3 (x - 3 \times 10^8 t) \right] \hat{j} \text{Vm}^{-1}$

$B_z = 60 \sin \left[\frac{\pi}{4} \times 10^3 (x - 3 \times 10^8 t) \right] \hat{k} \text{T}$

(D) $E_y = 2 \times 10^{-7} \sin \left[\frac{\pi}{4} \times 10^4 (x - 4 \times 10^8 t) \right] \hat{j} \text{Vm}^{-1}$

$B_z = 60 \sin \left[\frac{\pi}{4} \times 10^4 (x - 4 \times 10^8 t) \right] \hat{k} \text{T}$

Official Ans. by NTA (B)

Allen Ans. (B)

16. In young's double slit experiment performed using a monochromatic light of wavelength λ , when a glass plate ($\mu = 1.5$) of thickness $x\lambda$ is introduced in the path of the one of the interfering beams, the intensity at the position where the central maximum occurred previously remains unchanged. The value of x will be:

(A) 3
(B) 2
(C) 1.5
(D) 0.5

Official Ans. by NTA (B)

Allen Ans. (B)

17. Let K_1 and K_2 be the maximum kinetic energies of photo-electrons emitted when two monochromatic beams of wavelength λ_1 and λ_2 , respectively are incident on a metallic surface. If $\lambda_1 = 3\lambda_2$ then:

- (A) $K_1 > \frac{K_2}{3}$
 (B) $K_1 < \frac{K_2}{3}$
 (C) $K_1 = \frac{K_2}{3}$
 (D) $K_2 = \frac{K_1}{3}$

Official Ans. by NTA (B)

Allen Ans. (B)

18. Following statements related to radioactivity are given below:

- (A) Radioactivity is a random and spontaneous process and is dependent on physical and chemical conditions.
 (B) The number of un-decayed nuclei in the radioactive sample decays exponentially with time.
 (C) Slope of the graph of $\log_e(\text{no. of undecayed nuclei})$ Vs. time represents the reciprocal of mean life time (τ).
 (D) Product of decay constant (λ) and half-life time ($T_{1/2}$) is not constant.

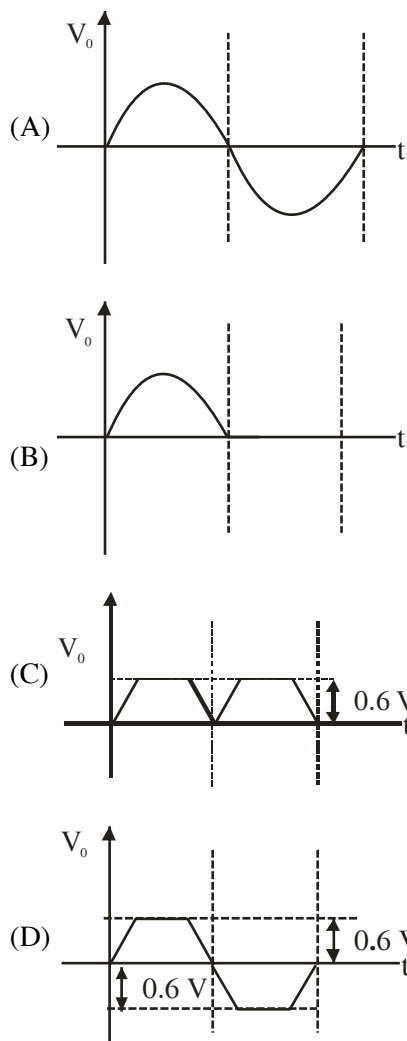
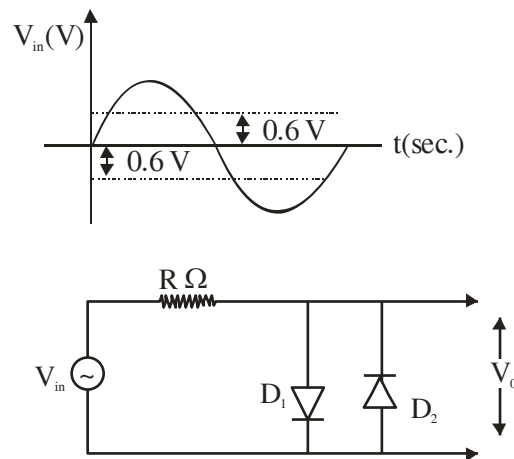
Choose the most appropriate answer from the options given below:

- (A) (A) and (B) only
 (B) (B) and (D) only
 (C) (B) and (C) only
 (D) (C) and (D) only

Official Ans. by NTA (C)

Allen Ans. (C)

19. In the given circuit the input voltage V_{in} is shown in figure. The cut-in voltage of p-n junction diode (D_1 or D_2) is 0.6 V. Which of the following output voltage (V_0) waveform across the diode is correct?



Official Ans. by NTA (D)

Allen Ans. (D)

20. Amplitude modulated wave is represented by

$$V_{AM} = 10 \left[1 + 0.4 \cos(2\pi \times 10^4 t) \right] \cos(2\pi \times 10^7 t).$$

The total bandwidth of the amplitude modulated wave is :

- (A) 10 kHz
(B) 20 MHz
(C) 20 kHz
(D) 10 MHz

Official Ans. by NTA (C)

Allen Ans. (C)

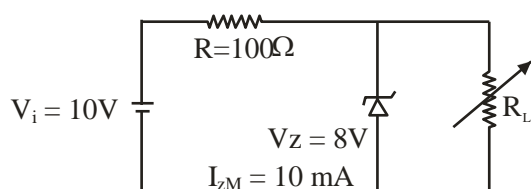
SECTION-B

1. A student in the laboratory measures thickness of a wire using screw gauge. The readings are 1.22 mm, 1.23 mm, 1.19 mm and 1.20 mm. The percentage error is $\frac{x}{121} \%$. The value of x is ____

Official Ans. by NTA (150)

Allen Ans. (150)

2. A Zener of breakdown voltage $V_Z = 8V$ and maximum zener current, $I_{ZM} = 10 \text{ mA}$ is subjected to an input voltage $V_i = 10V$ with series resistance $R = 100\Omega$. In the given circuit R_L represents the variable load resistance. The ratio of maximum and minimum value of R_L is ____



Official Ans. by NTA (2)

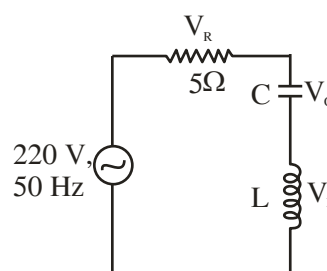
Allen Ans. (2)

3. In a Young's double slit experiment, an angular width of the fringe is 0.35° on a screen placed at 2 m away for particular wavelength of 450 nm. The angular width of the fringe, when whole system is immersed in a medium of refractive index $7/5$, is $\frac{1}{\alpha}$. The value of α is ____

Official Ans. by NTA (4)

Allen Ans. (4)

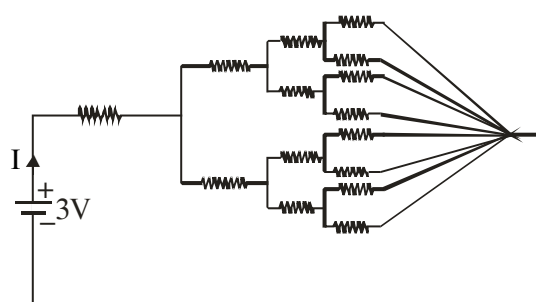
4. In the given circuit, the magnitude of V_L and V_C are twice that of V_R . Given that $f = 50 \text{ Hz}$, the inductance of the coil is $\frac{1}{K\pi} \text{ mH}$. The value of K is ____



Official Ans. by NTA (0)

Allen Ans. (0)

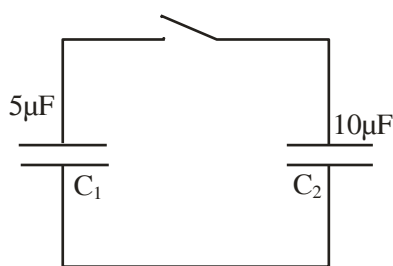
5. All resistances in figure are 1Ω each. The value of current 'I' is $\frac{a}{5} \text{ A}$. The value of a is ____



Official Ans. by NTA (8)

Allen Ans. (8)

6. A capacitor C_1 of capacitance $5\mu\text{F}$ is charged to a potential of 30 V using a battery. The battery is then removed and the charged capacitor is connected to an uncharged capacitor C_2 of capacitance $10\mu\text{F}$ as shown in figure. When the switch is closed charge flows between the capacitors. At equilibrium, the charge on the capacitor C_2 is _____ μC .



Official Ans. by NTA (100)

Allen Ans. (100)

7. A tuning fork of frequency 340 Hz resonates in the fundamental mode with an air column of length 125 cm in a cylindrical tube closed at one end. When water is slowly poured in it, the minimum height of water required for observing resonance once again is _____ cm .
(Velocity of sound in air is 340 ms^{-1})

Official Ans. by NTA (50)

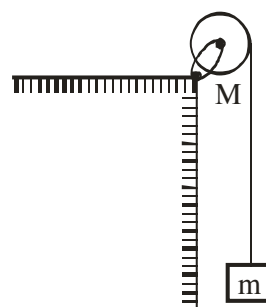
Allen Ans. (50)

8. A liquid of density 750 kgm^{-3} flows smoothly through a horizontal pipe that tapers in cross-sectional area from $A_1 = 1.2 \times 10^{-2}\text{ m}^2$ to $A_2 = \frac{A_1}{2}$. The pressure difference between the wide and narrow sections of the pipe is 4500 Pa . The rate of flow of liquid is _____ $\times 10^{-3}\text{ m}^3\text{ s}^{-1}$.

Official Ans. by NTA (24)

Allen Ans. (24)

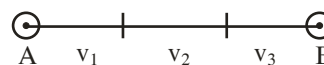
9. A uniform disc with mass $M = 4\text{ kg}$ and radius $R = 10\text{ cm}$ is mounted on a fixed horizontal axle as shown in figure. A block with mass $m = 2\text{ kg}$ hangs from a massless cord that is wrapped around the rim of the disc. During the fall of the block, the cord does not slip and there is no friction at the axle. The tension in the cord is _____ N .
(Take $g = 10\text{ ms}^{-2}$)



Official Ans. by NTA (10)

Allen Ans. (10)

10. A car covers AB distance with first one-third at velocity $v_1\text{ ms}^{-1}$, second one-third at $v_2\text{ ms}^{-1}$ and last one-third at $v_3\text{ ms}^{-1}$. If $v_3 = 3v_1$, $v_2 = 2v_1$ and $v_1 = 11\text{ ms}^{-1}$ then the average velocity of the car is _____ ms^{-1} .



Official Ans. by NTA (18)

Allen Ans. (18)